

1. Complete Monitoring and Documentation

The innovative Unimeditek VTP 300 is equipped with a printer port that documents all program runs and settings for consequent assessment and/or printing. This wide-ranging documentation system is accomplished of creating records to confirm with all up to date quality control standards and same can be exported into word processing.

2. Vigorous Paraffin Cleaning Cycle

The straight forward touch of the screen diminish the concentration of solvents contaminants in the paraffin. An vigorous removal process guarantees efficient paraffin cleaning, which extend the paraffin life, advance tissue quality, and eases the operating costs.

3. Fully Covered Fume System

A smart internal air handling system controls the infected air inside the instrument. All fumes are condensed and collected in a designated container. An activated, long-life carbon filter then absorbs any remaining fumes. This is one of Unimeditek's many protection improvements for a hazard free environment.

4. Superior Reagent Bottle and Cabinet Design

Unimeditek's distinctive reagent bottle design dependability prevents reagent carry-over. The cabinet is designed to compensate any fluctuations in the sizes of the reagent bottles so that bottle installation and removal can always advance effortlessly, without risk.

5. Practical Design Provides Easy of Use

Plenty surface space is available on the paraffin bath and the retort lid to assist the substitution of paraffin or cassettes baskets. The retort lid's protection lock is securely opened and closed with one hand. Additionally, it features color changing lights: green when closed and red when open. All user relevant functions, work areas, and connections are easily accessible. These include the hose connections for remote fill and drain of reagents and/or paraffin, the USB printer port, the USB port, and the connectors for the local and external remote alarm.

6. Remote Fill and Drain Improves User Safety

Unimeditek's remote Fill and Drain offers contact-free reagent hand-ling for superior user safety. The peripheral hose system easily drains reagents and paraffin. Filling the reagent bottles is safe and easy. The remote fill system guarantees that reagent bottles are always filled to the correct fluid level with no under-filled bottles. The result maximum user shield and tissue quality with minimum operating errors.

Key Features:

- Straight forward to learn and run user interface with solvent-resistant color touchscreen.
- Easy to use software with context-sensitive online help feature.
- Remote Service for real time application and service support.
- Extensive safety system with inventive reagent compatibility check.
- Instrument performance control.
- Remote Fill and Drain Feature.
- Superior Reagent Management System (RMS)
- Accurate temperature control and reagent agitation for short protocols.
- Vigorous paraffin cleaning programs, user programmable
- Vigorous SPC cleaning programs, user programmable
- Two-level password security
- Complete documentation options
- Sturdy construction, which integrates revolutionary Technology
- In-built over temperature /over pressure/over vacuum protection.
- Retort door with glass window at the top to allow for visual monitoring of chemicals during processing
- Spill tray inside the chamber to prevent spillage on the floor.
- Optional disposable wax container
- No. of programs : Unlimited
- User can run rapid biopsies during the day for fast processing & conventional programs overnight.
- Remote Alarm, Serial, Multiple USB communication, Printer port, connection to LIMS (optional)
- Possibility of interrupting an automatic process for reloading or removing cassettes.
- Easy editing & changing of programs, even during a processing run.
- User Programmable agitation vertical & horizontal (Air Bubbling Technology) / Magnetic Stirrer can be turned on/off and time for agitation is user defined.
- Process run screen displays all the parameters on LCD touch screen like current date, time, finish date & time, all zone temperature & pressure, cycles, current reagent in SPC, detailed program steps, errors, power failure, current status
- Auto restart function
- Compatible with xylene free substitute.
- Proprietary technology to check & take user command for low reagent levels/poor, bottle connection before start of program.
- In-built unlimited memory run/error log
- Locking facility to avoid inadvertent operation
- It features an inbuilt backlight facility to check the reagent level

Technical Specification

PROCESSING RETORT

Maximum capacity –	
Metal basket	300/500 cassettes approx.
Retort material	Stainless Steel
Level sensing	Optical sensors with digital display (optional)
Alcohol Specific Gravity Sensor	Optional
Processing retort volume/temp.	4/7 liters/Ambient to 75°C (User set limit)
Paraffin temperature range	Ambient, 30°C-75°C (User set limit)
Reagent temperature range	Ambient, 30°C-60°C/customizable
Temperature accuracy	+/- 1°C
Vacuum & pressure options	4 (V/P, V, P, Ambient)
Vacuum	-70 kPa (g)/programmable
Pressure	+35 kPa (g)/programmable
Recirculation (pump in/out)	
- Time before first cycle	12 minutes/customizable
- Time between cycles	20 minutes/customizable
Incubation time	0-99 hours, 59 minutes
Delayed end-time	programmable, up to one week

REAGENT BOTTLES

Number of reagent bottles	10
Reagent bottle volume	3/6 liters each
Clean cycle bottles	2/3

PARAFFIN BATHS

Number of paraffin baths	4/5, connected directly to the retort
Paraffin bath volume average	3/6 liters each
Paraffin melting time	approx.10 hours

OTHERS

Display	Color touchscreen solvent-resistant
Reagent Management System	
Remote fill and drain system	
Remote paraffin drain system	
Two external alarm connections	

DIMENSIONS & WEIGHT

Dimension (DxWxH)	3L - 720 x 600 x 1060 mm 6L - 760 x 900 x 1460 mm
Weight (instrument only)	3L - 150 kg approx. 6L - 200 kg approx.

Technical specifications subject to change. Wide range of accessories on request. State-of-the-art development, manufacturing and quality control procedures certified in compliance with DIN EN ISO 9001 – ensure highest quality and reliability



UNIMEDITREK PRIVATE LIMITED
14, Chitra Vihar, New Delhi-110092, India
Ph.: 0120-4474 685
M.: +91-98105 33445
E-mail: sales@unimeditek.com
Website: www.unilabequipments.com



Unimeditek Kshriom Series VTP-300

Fully Automated Vacuum Tissue Processor

Finer specimen
processing
on each run!



Unimeditek Kshriom Series VTP 300

Unimeditek Kshriom Series VTP 300 sets new standards for achieving finer specimen processing on each run. An open system capable of using standard cassettes from open market. This latest state-of-the-art technology equipment can be updated remotely by our expert technician for all the latest enhanced processing/monitoring techniques formulated by our continuous research and development work.

Unimeditek Kshriom Series VTP 300 is an elegant processor for paraffin infiltration of tissue, intended for everyday clinical and research histopathology. Unimeditek's Processor is designed, keeping in mind simplicity of use coupled with rich user interface experience for the user. It offers many unique features like Reagent Management System, and a one click start of user defined Favourite Programs and at the same time offers advance Specimen processing results with value for money. Unimeditek VTP 300 uses all high end components from the top component manufacturers around the world coupled with admirable engineering and manufacturing technology, which in return helps us offer our customers with a product with the maximum uptime in the world market.

Built to Last

"Made in technical collaboration with German Company", using the finest durable materials and components. The Unimeditek VTP 300 is built to last and symbolizes state-of-the-art engineering and production technology. Dependability and long-term cost savings make the Unimeditek VTP 300 the Novel Standard in automated tissue processing.

Colour Touch Screen Solvent Resistant

Glass Viewing Window (SPC)

SPC Lock

Colour Changing Light
(Error, Power Failure,
Door Lock)

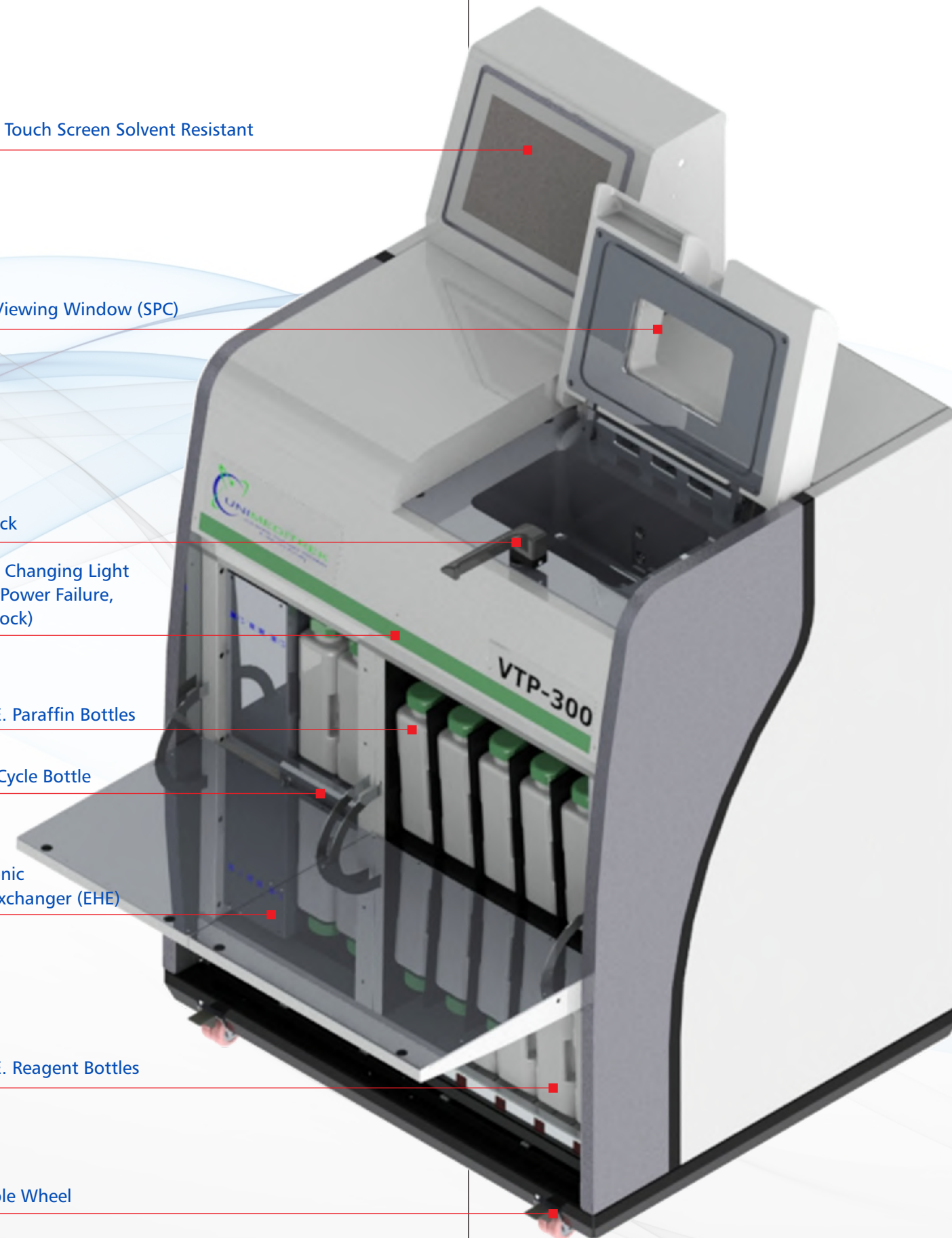
H.D.P.E. Paraffin Bottles

Clean Cycle Bottle

Electronic
Heat Exchanger (EHE)

H.D.P.E. Reagent Bottles

Lockable Wheel



Run your favourite program with a single touch

User at ease can define any of the programs as favourite program, which will be displayed always on the first screen and can be executed by a single touch on the intuitive touch screen. Quick Start feature provides user an advantage to schedule finish time of each program to his/her convenience before each of the program starts its execution. Quick start feature also reduces user intervention which excels operational dependability.

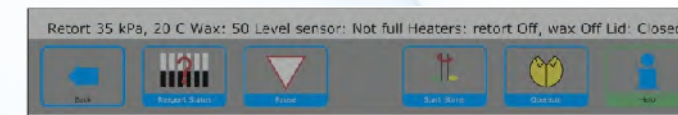
Finest Quality specimens, every time

Unimeditek Kshriom Series VTP 300 is devised to consistently deliver finest quality specimens – every day of year and always. Advanced process control, practical design, accurate temperature control and Electric Heat Exchanger to bring in the pre-heated chemicals in the Processing Chamber in seconds are just few of the characteristics to certify optimum quality.

Unimeditek Kshriom Series VTP 300 is an Elegant Processor for the efficiency of your laboratory.

Complete Process Supervision

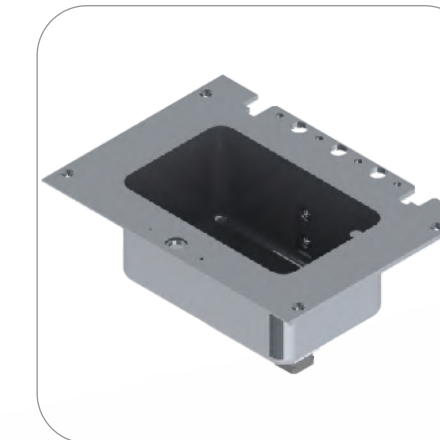
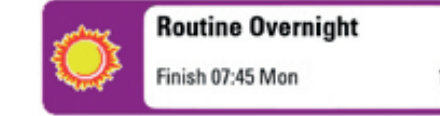
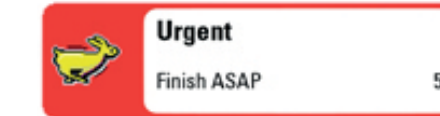
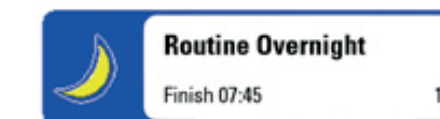
Unimeditek Kshriom Series VTP 300 and the technician work jointly as a team. The technician has the liberty to set all decisive program parameters to accomplish the just right process and can additionally manage tissue infiltration by altering the pressure levels inside the retort, as needed. Negligible reagent carryover-achieved by the software controlled multiple step draining process of the retort and by retort design itself-also helps achieve Better specimen quality every time.



Real-time process data about key instrument settings, such as current filling status, temperature and pressure inside the retort, paraffin bath temperature, as well as status of the paraffin bath and retort heating systems, is always available.

Complete Specimen Protection

A complete, intellectual safety system dependability guards the specimens. The system even applies the best emergency plan for thriving tissue processing should anything unforeseen occur; for example, a power failure or operating errors such as missing or under-filled reagent bottles. The system's most essential aim is always protection against potential loss of a specimen. The system also incorporates in-built UPS with power bank upto 45 minutes.



User Friendly Software

Unimeditek Kshriom Series VTP 300 software is effortless to learn and features a smart yet easy-to-operate user interface. Offered in a lot of diverse languages with intuitive graphics, Unimeditek Kshriom Series VTP 300 software, operated via a solvent-resistant colour touch screen, stresses the technician safely and efficiently throughout the tissue processing program. The system comes with standard one cleaning program and 20 user programmable process program which can be upgraded to any number of program as required by user.

Incorporated Quality Assurance

Unimeditek's superior Reagent Management System and printable data tracking aids the laboratory to conform with accrediting agency regulations and QC requirements. All vital data from each process step is automatically recorded into a data file and can be printed. The multi-level password security system guarantees that only authoritative personnel can control the Unimeditek Kshriom Series VTP 300. The software features context-sensitive help to answer common questions.

Improved Reagent Management System

Unimeditek's complete Reagent Management System (RMS) lets vital data to be viewed at a glance. The RMS guarantees that every reagent and paraffin is automatically used in the order of purity. The user-programmable warning threshold automatically indicate, in a timely manner, when reagents need to be changed. The RMS ensures high-quality specimens and simultaneously reduces the cost of instrument operation through economic reagent usage. For documentation and assessment purposes, reagent and specimen data can be exported and saved into word processing or spreadsheet programs and printed. User programmable fill & drain time which alerts user in case of excess or less fill/drain time. User can use RMS either with specific gravity of first alcohol as an indication for reagent change or set individual threshold limit for each reagent station.

Unimeditek Remote Support

Innovative immediate application and service support

Tissue Processor downtime considerably impacts the efficiency of your laboratory and the quality of tissues. To help capitalize on uptime and the performance of your most vital process step, tissue processing, Unimeditek now get service and application support to the next level. The likelihood to establish system problems remotely with reasonable precision facilitate customers avert problems that can originate downtime and specimen loss. The system automatically mails/alert the user about any system errors, alarms & reagent change (Remote Alarm) Remote Support supervise the VTP 300 in real time, capture instrument data, and proactively solve probable issues. This is accomplished through an internet connection from VTP 300's on-board computer. Privacy is always confined by the Remote Care service. Remote care service can be installed during the installation of the VTP 300 or during routine engineer visit. Also you can upgrade your VTP 300 to remote care anytime.